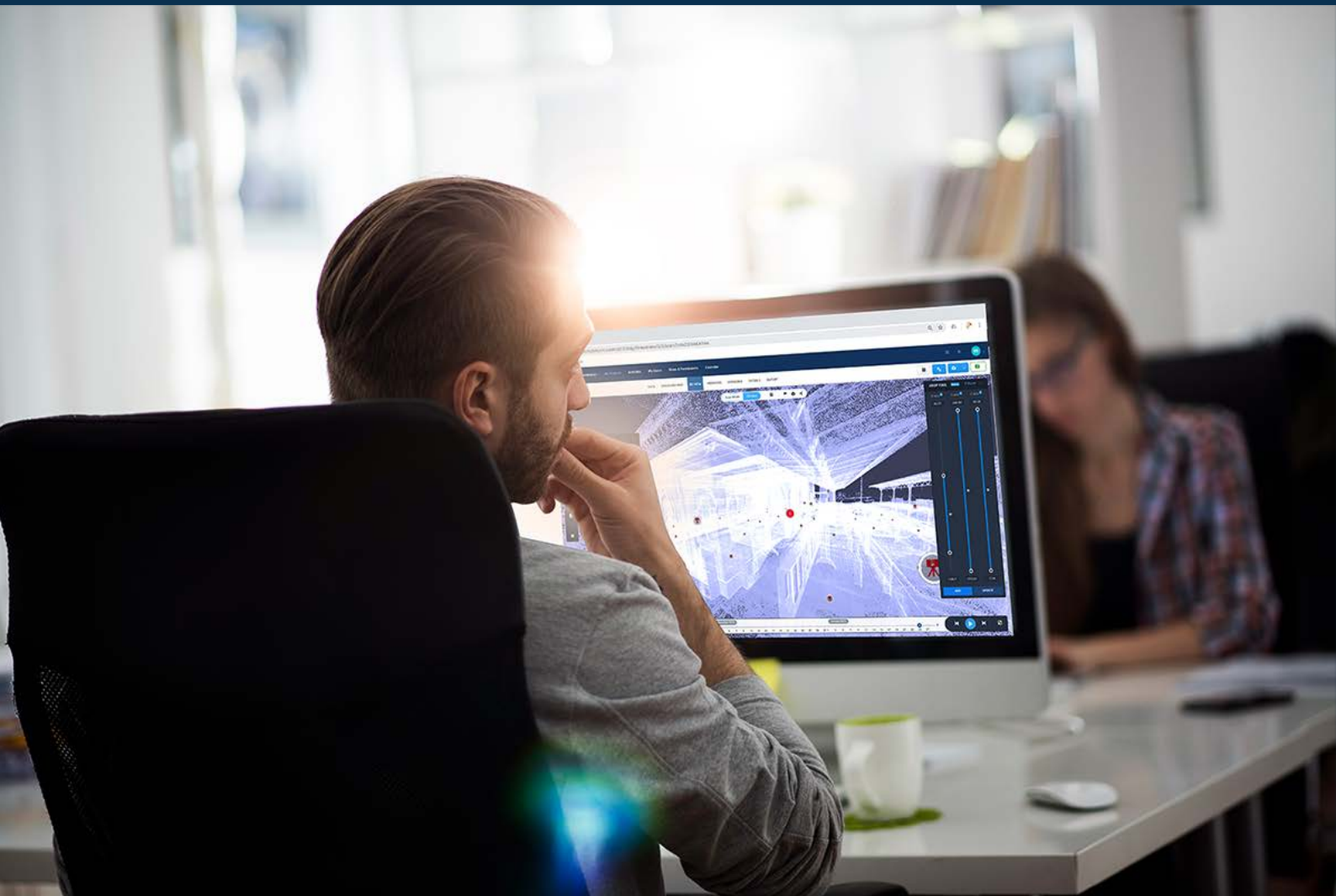


# Cintoo Cloud Customer FAQ

---

Packaging/Price Changes Effective September 9, 2019





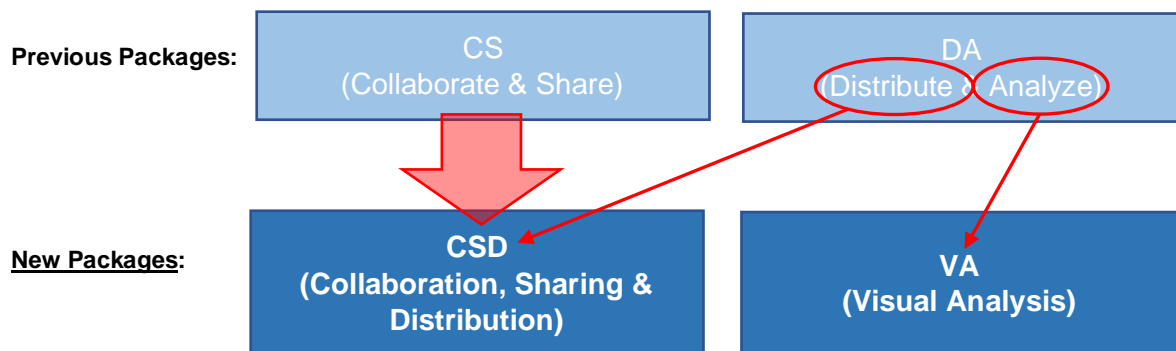
## Cintoo Cloud Customer FAQ

Packaging/Price Changes Effective September 9, 2019

[CLICK HERE TO VISIT THE CINTOO PRICING PAGE](#)

### Why are we making changes?

- To simplify the package offering and allow customer to derive more value from the base Cintoo Cloud platform:
  - Collaborate & Share subscription is being repackaged as the **Collaboration, Sharing & Distribution** subscription
  - Distribute & Analyze tools are now repackaged as **Visual Analysis** tools. These are project-based and can be unlocked as subscriptions on a monthly or yearly basis, or in the form of daily tokens.



- The new packages are designed to extend the base Collaboration, Sharing and Distribution (CSD) subscription with a series of more valuable features, such as the ability to export of scan data or crops, as well as having VR streaming available on all of your projects. The tools found in the Visual Analysis subscription have been clustered together for customers with specific scan-BIM and QA/QC workflows. These include:
  - Scan vs model comparison
  - Scan vs scan comparison
  - Scan-model alignment
  - Scan-BIM comparison in VR
  - Advanced Shared Viewer for scan & BIM projects



### **I currently have an existing Cintoo Cloud Subscription. How will this affect my subscription price moving forward?**

- We understand that this may affect your existing subscription and value your business as a trusted customer. Please contact us at [sales@cintoo.com](mailto:sales@cintoo.com) or your Cintoo sales representative and we will work with you on a case-by-case basis to ensure that a viable solution to meet your project and budgeting needs is found.

### **What else is new?**

- Due to customer demand, we can now support additional services to meet your corporate or project requirements (at an additional cost) such as:
  - Integration with your corporate SSO (Single Sign On)
  - Integration with your company's Active Directory
  - Integration within your Private Data Center
  - Branding and customization of the Cintoo Cloud UI with your company logo and brand guidelines
- Please contact Cintoo at [sales@cintoo.com](mailto:sales@cintoo.com) to discuss each one of these items.

### **What about unified meshes and other web services?**

- Additional web services such as the creation and export of unified meshes are due for release in the next few weeks.
- Quantitative analysis tools such as the Floor Flatness and Levelness analysis will follow in Q4 2019 and will leverage these unified meshes.
- These web services all require intensive cloud-computing and will be sold on a pay-per-use basis at reasonable cost, based on your usage.

### **What has changed in the Cintoo Cloud packages?**

- Please refer to the tables below to understand what is included in the new packages.

### **Who should I contact for more information?**

- Please send all your comments and questions to [sales@cintoo.com](mailto:sales@cintoo.com)

## Collaboration, Sharing & Distribution

Price based on # of scans

Starting at 500 scans

<b><u>Existing Functionality</u></b> <i>(Previously Collaborate &amp; Share)</i>	<b><u>What Has Been Added</u></b> <i>(Previously required tokens to be unlocked – Now part of the subscription)</i>
<p><b>Create Projects</b></p> <ul style="list-style-type: none"> <li>• 3 Cloud Hosting Options</li> </ul> <p><b>Upload Scans</b></p> <ul style="list-style-type: none"> <li>• RCP, FLS, e57</li> </ul> <p><b>Upload CAD Models</b></p> <ul style="list-style-type: none"> <li>• Upload BIM models (IFC)</li> </ul> <p><b>Manage Scan Data</b></p> <ul style="list-style-type: none"> <li>• Map, Thumbnails, lists</li> <li>• Search Advanced Search</li> <li>• Versioning</li> </ul> <p><b>View</b></p> <ul style="list-style-type: none"> <li>• Data, Overview Map, 3D-View</li> <li>• Display in RGB, X-Ray, Surface, Height, 360 images</li> <li>• Display BIM models in RGB, X-Ray</li> </ul> <p><b>Organize Scan Projects</b></p> <ul style="list-style-type: none"> <li>• Work Zones</li> </ul> <p><b>Cropping Tools</b></p> <ul style="list-style-type: none"> <li>• In X, Y, or Z axis from Overview Map or 3D view</li> <li>• Align crop to screen in Overview Map (rotate)</li> <li>• Save &amp; edit unlimited crops</li> </ul> <p><b>Collaborate</b></p> <ul style="list-style-type: none"> <li>• Invite Users &amp; Team members</li> <li>• Manage access &amp; sharing rights</li> </ul> <p><b>Annotate</b></p> <ul style="list-style-type: none"> <li>• Create notes, private notes or issues</li> <li>• Add meta data: text, photos, videos, URLs</li> </ul> <p><b>Measure</b></p> <ul style="list-style-type: none"> <li>• Linear measurements</li> </ul> <p><b>Play Sequence</b></p> <ul style="list-style-type: none"> <li>• Play capture sequence via the timeline</li> </ul> <p><b>Reports</b></p> <ul style="list-style-type: none"> <li>• Measurement &amp; Annotation</li> <li>• Screenshots</li> </ul>	<p><b>Distribute Scans via the Cloud</b></p> <ul style="list-style-type: none"> <li>• Download and export scan data as point cloud data as <ul style="list-style-type: none"> <li>◦ Structured e57</li> <li>◦ Unified RCP/RCS</li> </ul> </li> </ul> <p><b>Shared 3D viewer (Scan only)</b></p> <ul style="list-style-type: none"> <li>• Add company logo</li> <li>• Set time limits and passwords</li> <li>• Share metadata (measurements and annotations)</li> </ul> <p><b>VR streaming (Scan only)</b></p> <ul style="list-style-type: none"> <li>• Connect to Oculus Rift or HTC Vive Pro</li> <li>• Navigate from Scan to Scan positions</li> <li>• Navigate in Unified Meshes</li> <li>• Display in RGB, X-Ray or Surface mode</li> </ul>

## Visual Analysis

Pricing is based on the number of projects unlocked and their duration  
 Durations start with 1 project for periods of 1 month or 1 day

### **Existing Functionality**

*(Previously Distribute & Analyze)*

*(Requires Monthly/Yearly subs or daily tokens to be unlocked)*

#### **Align Scan & BIM**

- Align Scan to BIM or BIM to Scan
- Export the alignment to Revit and Navisworks

#### **Compare Scan data & BIM Model (Scan vs. BIM)**

- Overlay the BIM model to the scan
- Compare using the Visual Difference and Visual Check tools
- Generate heat map based on tolerance input

#### **VR Streaming (Scan & BIM)**

- Connect to Oculus Rift or HTC Vive Pro
- Navigate from Scan to Scan positions
- Scan & BIM display
- Display in RGB, X-Ray or Surface mode
- Take measurements

#### **Advanced Shared 3D viewer (Scan & BIM)**

- Share Scan & BIM data
- Add your company logo
- Set time limits and passwords
- Share metadata (measurements and annotations)

#### **Coming Soon:**

Compare Scan versions (Scan vs. Scan)

- Display scan versions using the timeline
- Align Scan to Scan
- Compare using the Visual Difference and Visual Check tools
- Generate heat map based on tolerance input

### **What Has Been Added**

*(Requires Monthly/Yearly subs or daily tokens to be unlocked)*

#### **BIM 360 Interoperability**

- Push RVT, NWD, DWG, IFC from BIM 360

#### **Issue Tracking**

- Issue sharing in BCF Format



---

### Cintoo SAS, France

Green Side – Bâtiment 5  
400 Avenue Roumanille  
06410 Biot-Sophia Antipolis  
France

### Cintoo US Inc, USA

990 Biscayne Blvd.  
Office 701  
Miami, FL 33132  
USA

---

**Web Site:** <https://cintoo.com>

**Email:** [sales@cintoo.com](mailto:sales@cintoo.com)